

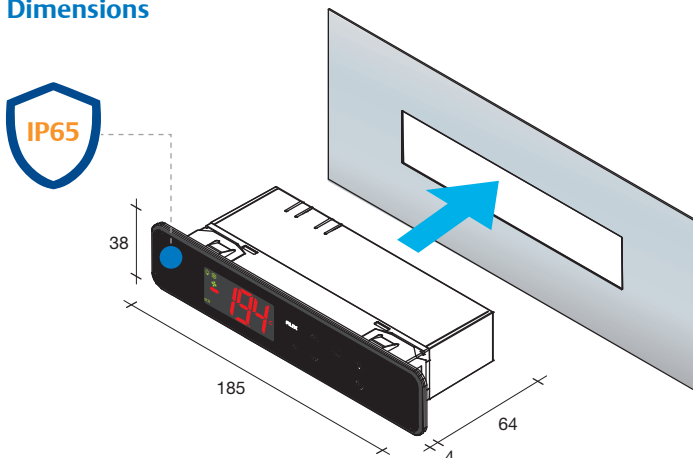
WING LH



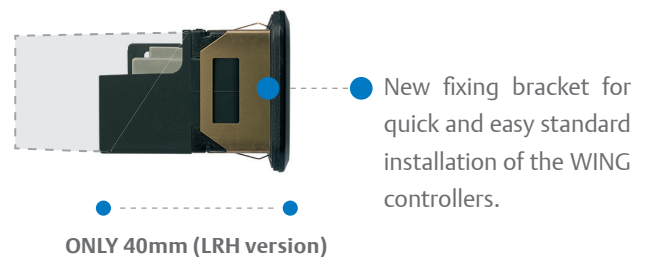
Refrigeration controllers in LH format

	STATIC APPLICATIONS		VENTILATED APPLICATIONS			
FEATURES	XW20LH	XW20LRH	XW60LH	XW60LRH	XW70LH	XW90LH
Keyboard: push buttons	6	6	6	6	8	8
Power supply	110, 230Vac	110, 230Vac	110, 230Vac	110, 230Vac	110, 230Vac	110, 230Vac
Probe inputs						
Thermostat	NTC, PTC	NTC, PTC	NTC, PTC	NTC, PTC	NTC, PTC	NTC, PTC
Defrost	NTC, PTC	NTC, PTC	NTC, PTC	NTC, PTC	NTC, PTC	NTC, PTC
Condenser	NTC, PTC	NTC, PTC	NTC, PTC	NTC, PTC	NTC, PTC	NTC, PTC
Display	NTC, PTC		NTC, PTC		NTC, PTC	NTC, PTC
Digital inputs						
Alarm, start defrost, door switch, pressure switch, energy saving, ON/OFF	2 x config	2 x config	2 x config	2 x config	2 x config	2 x config
Relay outputs						
Compressor	20A	20A	20A	20A	20A	20A
Defrost			8A	8A	16A	16A
Fans			8A	5A	8A	8A
Light	8A, 16A	8A	8A, 16A	5A	8A, 16A	8A, 16A
Alarm, AUX					8A	8A
RL 6 configurable						8A
Other						
Hot Key/Prog Tool Kit output	pres	pres	pres	pres	pres	pres
Remote display output	opt	opt	opt		opt	opt
Serial output	TTL	TTL	TTL	TTL	TTL	TTL
Buzzer	opt	opt	opt	opt	opt	opt
Real time clock	opt	opt	opt	opt	opt	opt

Dimensions



High versatility



LH/VH keyboards

Also the WING K Series (split version) is available in the LH version by using the T620H or T820H keyboards or in vertical format by using the V620H one.



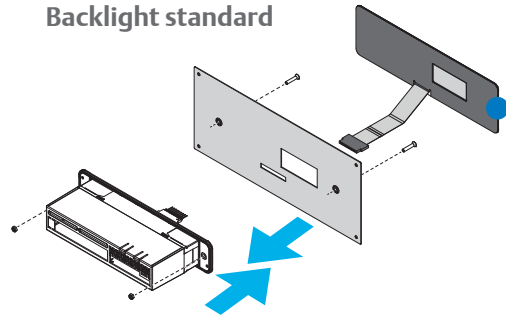
Back panel solution with membrane keyboard

Brand visibility & high customization level

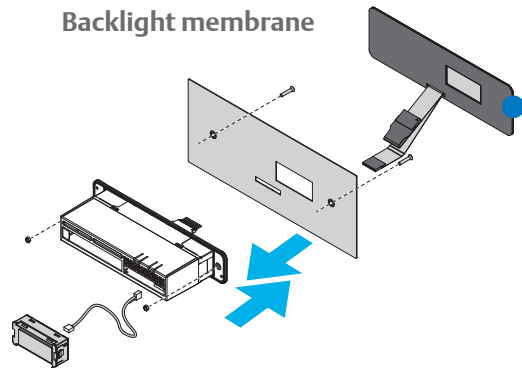
Thanks to its superior versatility, the WING LH is available in a back-panel version that allows the user to have an extensive level of customization ability. Shape, colors and dimensions can be customized depending on the brand or application.



Backlight standard



Backlight membrane



Accessories



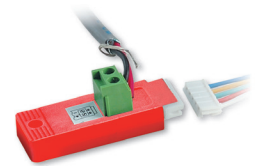
CXLS & HLS

White, red, green or yellow light switch (CXLS) 16A/250Vac with black frame adapter (HLS).



HOT KEY

Easy programmable device; it allows instruments to be programmed in a fast and simple way.



XJ485CX

The serial interface converts the TTL output into an RS485 signal that can be used to connect the controller to the XWEB systems.

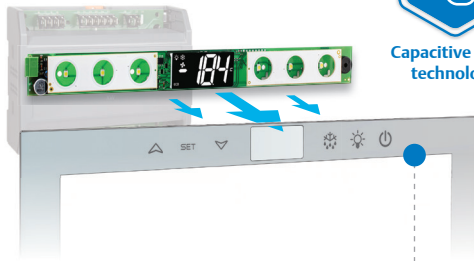
Special keyboards

Dixell extends its range of customizable solutions for commercial refrigerated applications with 2 innovative keyboards that work in combination with WING controllers in K format (XW20K, XW40K, XW60K, XW70K).

T620GT



Capacitive touch technology



Keyboard with touch keys integrated into the unit features a visually aesthetic design.

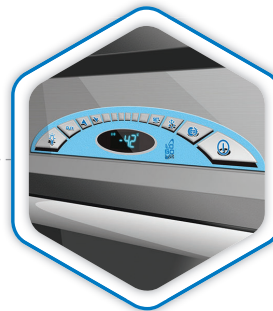
The keyboard allows different solutions of back-panel mounting, such as the back-glass or back-plexiglass mounting. In this way the surface results completely flat and guarantees an easy cleaning and a high level of hygiene and front protection.



D60



Dixell's new membrane solution maximizes the possibility of configuration by users. Interface modification is available depending on the cabinet model in terms of keys, color, shape and dimensions. The remote display is available with or without mechanical buttons; the version containing buttons is used with polycarbonate frontal and has up to 6 buttons.



D60LM
Membrane version



D60VM
Membrane version



D60VB
Mechanical keys version



MDP/CX

Plastic anti-condensing protection cover for terminal block of CH controllers.



XH-REP

Remote display for temperature reading available in red, white or blue color. IP65, 31x64mm.



WIZMATE PROG-TOOL KIT

Programming tool for a quick and easy parameter update.