

MAIN FEATURES

- LINUX Operative System
- ISaGRAPH® Software
- 200MHz CPU and 32bit Processor
- 32MB (for 4 DIN), 64MB (for 10 DIN) RAM Memory
- Format: 4 DIN Rail (110x70x59,5mm)
10 DIN Rail (110x175x59,5mm)
- Housing: Self Extinguishing ABS
- DIN Rail or Wall Mounting

iPro.GENIUS Programmable Controllers for GENERAL PURPOSE APPLICATIONS



iPro.CHILL Controllers for AIR CONDITIONING APPLICATIONS



iPro.RACK Controllers for COMPRESSOR RACK APPLICATIONS



iPX Expansion Modules for iPro SERIES



FEATURES	IPG108D	IPG108E	IPG115D	IPG208D	IPG215D	IPG215F	IPC108D	IPC108E	IPC115D	IPR208D	IPR215D	IPX106D	IPX115D	IPX125D	IPX206D	IPX215D	IPX225D	IPX306D
Format	4 DIN Rail	4 DIN Rail	10 DIN Rail	4 DIN Rail	10 DIN Rail	10 DIN Rail	4 DIN Rail	4 DIN Rail	10 DIN Rail	4 DIN Rail	10 DIN Rail	4 DIN Rail	10 DIN Rail	10 DIN Rail	4 DIN Rail	10 DIN Rail	10 DIN Rail	4 DIN Rail
Display		dual + icons						dual + icons										
Front leds						n° 5												
Power supply	24Vac/dc from TF40D	24Vac/dc from TF40D	24Vac/dc from TF20D	24Vac/dc from TF40D	24Vac/dc from TF20D	24Vac/dc from TF20D	24Vac/dc from TF40D	24Vac/dc from TF40D	24Vac/dc from TF20D	24Vac/dc from TF40D	24Vac/dc from TF20D	24Vac/dc from TF10D	24Vac/dc from TF20D	24Vac/dc from TF20D	24Vac/dc from TF10D	24Vac/dc from TF20D	24Vac/dc from TF20D	24Vac/dc from TF10D
Probe inputs	0÷1V, 0÷5V, 0÷20mA, 0÷20mA, NTC, PTC, DI	6 config	6 config	10 config	6 config	10 config	6 config	6 config	10 config	6 config	10 config	7 config	10 config	10 config	7 config	10 config	10 config	7 config
Digital inputs																		
Optoinsulated	11 config	11 config	20 config	11 config	20 config	20 config	11 config	11 config	20 config	11 config	20 config	3 config	20 config	20 config	3 config	20 config	20 config	3 config
Relay outputs																		
Configurable	8x5A	8x5A	12x5A + 3x8A	8x5A	15x5A	15x5A	8x5A	8x5A	12x5A + 3x8A 10x5A + 5xSSR opt	8x5A	15x5A	6x5A	12x5A + 3x8A	18x5A + 3x8A + 4xSSR	5x5A + 1x8A	15x5A	21x5A + 4xSSR	5x5A + 1x8A
Other outputs																		
PWM			2 config			2 config			2 config		2 config							
0÷10V or 4÷20mA	4 config	4 config	4	4 config	2 config 4	2 config 4	4 config	4 config	4	4 config	2 config 4		2 config 4	2 config 4		2 config 4	2 config 4	3
0÷10V																		
RS485	slave	slave	master + slave	slave	master + slave	master + slave	slave	slave	master + slave	slave	master + slave							
USB	pres	pres	pres	pres	pres	pres	pres	pres	pres	pres	pres							
External modem			GSM, analogue opt		GSM, analogue opt	GSM, analogue opt			GSM, analogue opt									
LAN/RS485 master (for iPX only LAN)	pres	pres		pres			pres	pres		pres		pres	pres	pres	pres	pres	pres	pres
CANBus			pres		pres	pres			pres		pres							
Ethernet	via USB-ETH-CONV	via USB-ETH-CONV	opt	via USB-ETH-CONV	opt	opt	via USB-ETH-CONV	via USB-ETH-CONV	opt	via USB-ETH-CONV	opt							
Other																		
Remote keyboard	1xVGIPG	1xVGIPG	2xVGIPG	1xVGIPG	2xVGIPG	2xVGIPG	1xVGIPC	1xVGIPC	2xVGIPC	1xVGIPC	2xVGIPG							
Internal modem			analogue opt		analogue opt	analogue opt			analogue opt									
Real time clock	pres	pres	pres	pres	pres	pres	pres	pres	pres	pres	pres							
Flash memory	32MB	32MB	128MB	32MB	128MB	128MB	32MB	32MB	128MB	32MB	128MB							
Dip switch for address set												pres	pres	pres	pres	pres	pres	pres
Connections	disconnectable + screw	disconnectable + screw	disconnectable	bayonet + screw	bayonet + screw	bayonet + screw	disconnectable + screw	disconnectable + screw	disconnectable	bayonet + screw	bayonet + screw	disconnectable	disconnectable	disconnectable	bayonet + screw	bayonet + screw	bayonet + screw	disconnectable + screw
Connection kit	DWS30-KIT, IP-FC108	DWS30-KIT, IP-FC108	DWB30-KIT	IP-FC208	IP-FC215CP	IP-FC215CP	DWS30-KIT, IP-FC108	DWS30-KIT, IP-FC108	DWS30-KIT	IP-FC208	IP-FC215CP	DWEX60-30KIT	DWX115-30KIT	DWEX70-30KIT	IP-FCEX60	IP-FCEX215	IP-FCEX70	DWEX306-30KIT
Expansion modules	IPX115D, IPX125D, IPX306D	IPX115D, IPX125D, IPX306D	IPX106D, IPX115D, IPX125D	IPX206D, IPX215D, IPX225D	IPX215D, IPX225D	IPX215D, IPX225D	IPX115D, IPX125D, IPX306D	IPX115D, IPX125D, IPX306D	IPX106D, IPX115D, IPX125D									
BACnet protocol	opt	opt	opt	opt	opt	opt	opt	opt	opt	opt	opt							

MAIN ACCESSORIES

GRAPHIC DISPLAYS



- LCD with 240x96pixels
 - Format: 82x156mm
 - Power supply: from controller
 - Visokey output
 - Buzzer (optional)
 - ASCII or UNICODE
 - Wall or panel mounting
- VGIPG: for iProGENIUS, iProRACK and IPL500D
VGIPC: for iProCHILL

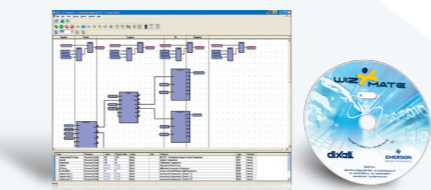
TOUCH SCREEN DISPLAYS



- TGIPG**
Programmable TFT touch screen displays available in 3 different formats:
4,3": 16:9 - 480x272pixels - 104x145mm
7": 16:9 - 800x480pixels - 143x204mm
10,4": 4:3 - 640x480pixels - 228x280mm

- Power supply: 24Vdc
- Ethernet output
- USB output
- 2xRS485/232/422 serial outputs
- Buzzer (beeps when pressed)
- Real time clock
- Panel mounting

DEVELOPMENT TOOL



- IPRO-TOOL**
It is a complete and easy to use tool that allows the user to work independently to create applications for iPro controllers, taking advantage of all the programmable series potential. The package includes manuals and the ISaGRAF®, WIZMATE and VISOPROG (optional) software

ADAPTER



- USB-ETH-CONV**
USB-Ethernet adapter for iPro controllers in 4 DIN format

EEV DRIVER



- XE2V20**
Driver for 1 or 2 unipolar and bipolar stepper electronic expansion valves designed for iProGENIUS and iProCHILL

- Format: 4 DIN Rail
- Power supply: 24 Vac/dc (from TF20D/TF40D)
- Probe inputs: 4x0÷5V/4÷20mA/NTC/PTC/Pt1000 config
- LAN output
- CANBus output
- Dip switch address selection
- DWXEV30 connection kit

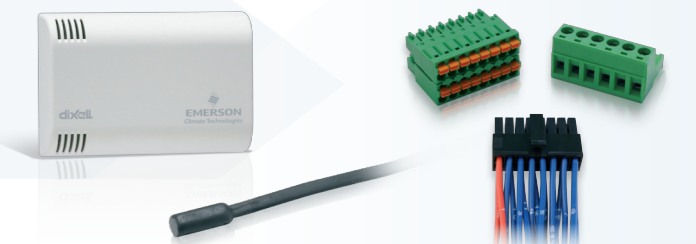
CONNECTIVITY MODULE



- IPL500D**
Programmable connectivity module designed to collect, store, process and manage data

- Format: 4 DIN Rail
- Power supply: 24Vac/dc (from TF20D)
- RS485 slave output
- USB output
- LAN/RS485 master output
- CANBus output
- Ethernet output
- Remote keyboard: VGIPG
- Internal modem: GPRS (optional)
- Real time clock
- Flash memory: 128MB
- IP-FC500 connection kit
- BACnet protocol (optional)

PROBES AND ACCESSORIES



For further information concerning probes and wiring/accessories please contact Dixell or visit www.dixell.com

Dixell reserves the right to alter its products without notice. All rights reserved. Manuals and updates are available on our Web Site