



iProRACK SERIES: up to 2 CIRCUIT and 6 COMPRESSOR per CIRCUIT APPLICATIONS

- Electronic controllers for compressor racks studied to manage even the most complex installations
- Management of scroll, semi-hermetic, multi-stages, different capacity and screw compressors
- Management of 2 circuits with 2 inverters
- Transcritical CO₂ regulation
- Special algorithms for energy saving
- Suction and condensing dynamic set point optimization
- Sub-cooling management
- Copeland Stream CoreSense™ diagnostics control module integration
- Concise information about the variables of the compressor rack through the VISOGRAPH
- Powerful platform with LINUX operating system on CPU ARM9 (200MHz/32bit)
- Ethernet for the connection to an intranet-internet network
- USB output for configuration update
- RS485 slave serial outputs for the connection to XWEB supervising and controlling systems
- Type of refrigerants: R22, R134A, R404A, R507, R717, R407, R407C, R407F

HOW to ORDER

IPR208D I P R 2 0 8 D - 1 0 C 2 0

IPR215D I P R 2 1 5 D - 1 0 C 0 0

C

Ethernet, protocols

0 = No

1 = Yes

VGIPG V G I P G - A B O D O

A

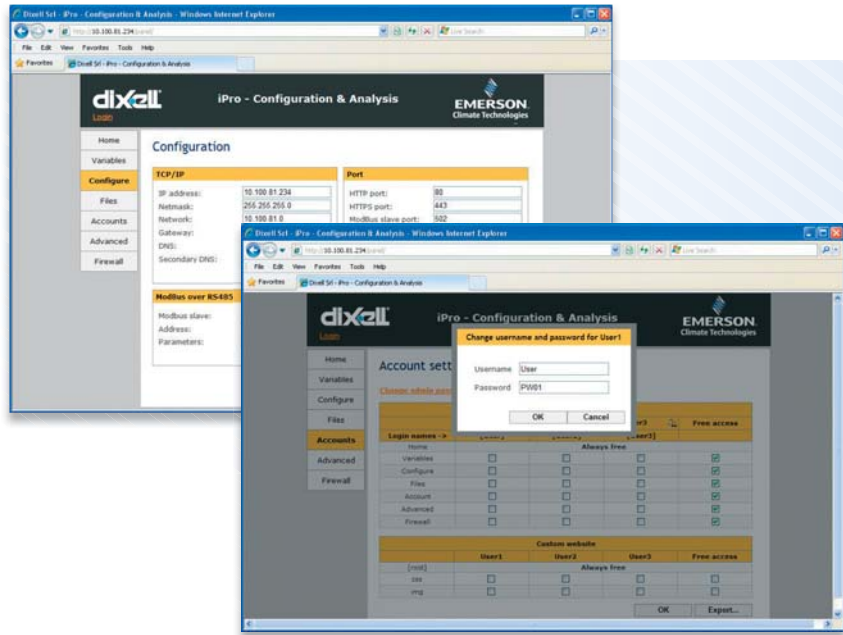
B

D

Buzzer	Kind of mounting	Coding
0 = No	P = Panel	0 = Ascii
1 = Yes	W = Wall	1 = Unicode

INTERNAL WEB SERVER

The iProRACK controllers have an integrated web site that can be easily reached through a standard browser. This instrument is very useful to configure the controller and to display and change the machine variables.

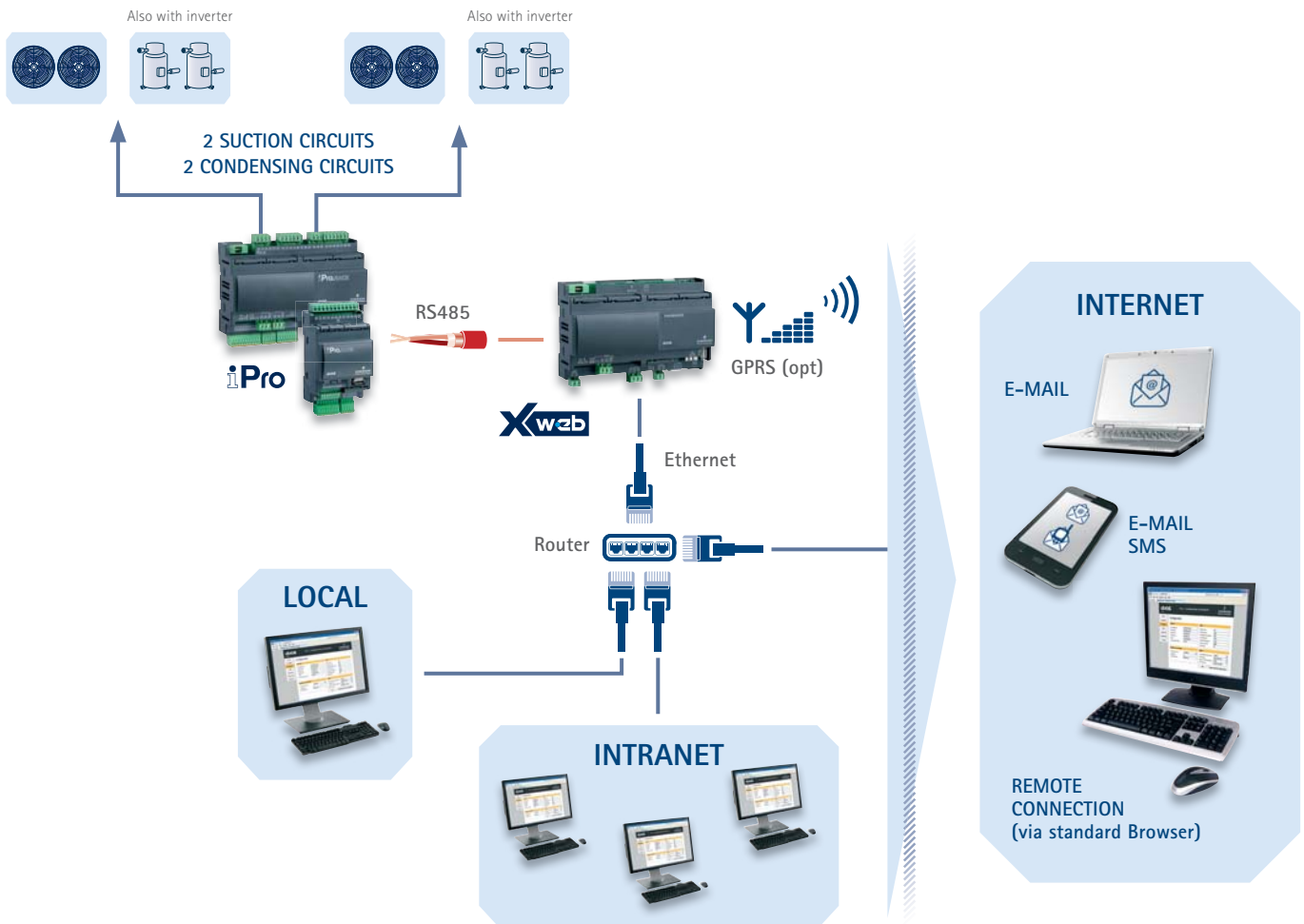


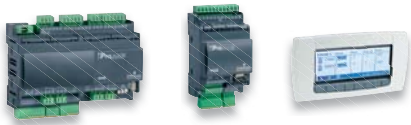
MAIN FEATURES

- CPU: 200MHz
- Processor: 32bit
- RAM memory: 32MB (4 DIN Rail), 64MB (10 DIN Rail)
- Data storage on Flash memory: 32MB (4 DIN Rail), 128MB (10 DIN Rail)
- Power absorption: 40VA max (4 DIN Rail), 20VA max (10 DIN Rail)

CONNECTIVITY

The powerful platform that marks the iProRACK controllers and allows the compressor rack to be easily and quickly reached both locally and remotely. In addition to the connection via Ethernet, there is also one via RS485 that allows the connection to XWEB systems, ensuring complete plant monitoring and controlling.



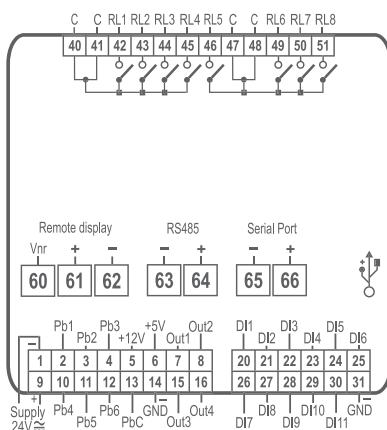


D: 10 DIN Rail D: 4 DIN Rail VG: 82x156mm

IPR208D	Digital controller in 4 DIN Rail format with bayonet + screw connectors for compressor rack management
IPR215D	Digital controller in 10 DIN Rail format with bayonet + screw connectors for compressor rack management
VGIPG	Remote keyboard with LCD graphic display and interface dedicated to the management of compressor racks by means of iProRACK controllers (IP65 front protection)

FEATURES	IPR208D	IPR215D	VGIPG
Display	LCD on VGIPG	LCD on VGIPG	LCD - 240x96pixels
Power supply	24Vac/dc from TF40D	24Vac/dc from TF20D	from controller
Probe inputs			
0÷1V, 0÷5V, 0÷10V, 0÷20mA, 4÷20mA, NTC, PTC, DI	6 x config	10 x config	
Digital inputs			
Opto-insulated	11 x config	20 x config	
Relay outputs			
Configurable	8 x 5A	15 x 5A	
Other outputs			
0÷10V/4÷20mA	4 x config	2 x config	
0÷10V		4	
RS485	master + slave	master + slave	
USB	pres	pres	
CANBus		pres	
Ethernet	via USB-ETH-CONV	opt	
Visokey			pres
Other			
Remote display	1 x VGIPG	2 x VGIPG	
Real time clock	pres	pres	
Flash memory	32MB	128MB	
Connections	bayonet + screw	bayonet + screw	
Connection kit	IP-FC208	IP-FC215CP	
BACnet protocol	opt	opt	
Buzzer			opt

IPR208D



IPR215D

