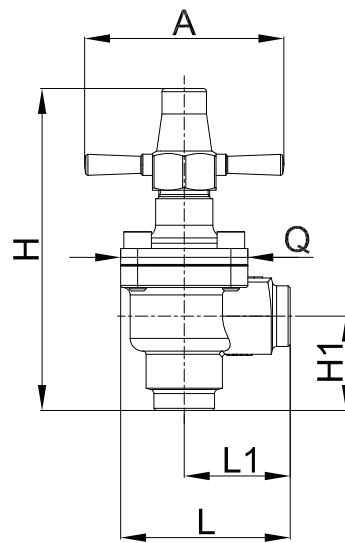


6512



6532

### GLOBE VALVES

These valves are available in the following two types:

- 6512 with straight solder connections
- 6532 with right-angle solder connections

The main parts of the globe valves are made with the following materials:

- Hot forged brass EN 12420 – CW 617N for body, cover and cap that covers the spindle
- Steel, with proper surface protection, for the spindle.
- Chloroprene rubber (CR) and aramid fibres for gland seal
- Metal-rubber laminate for outlet seal gaskets
- PTFE for seat gaskets.

TABLE 14: General characteristics of globe valves

Catalogue Number	Connections				Kv Factor [m <sup>3</sup> /h]	PS [bar]	TS [°C]		TA [°C]		Risk Category according to PED Recast
	ODS		ODM				min.	max.	min.	max.	
	Ø [in.]	Ø [mm]	Ø [in.]	Ø [mm]							
6512/M22	–	22	–	28	7,1	45	-35	+160	-35	+50	Art. 4.3
6512/7	7/8"	–	1.1/8"	–							
6512/M28	–	28	1.3/8"	35	8,4						
6512/9	1.1/8"	–	1.3/8"	35							
6512/11	1.3/8"	35	1.5/8"	–	15,0						
6512/13	1.5/8"	–	2"	–							
6512/M42	–	42	2"	–	25,0						
6512/17	2.1/8"	54	–	–							40,0
6532/M22	–	22	–	28	8,2						
6532/7	7/8"	–	1.1/8"	–							
6532/M28	–	28	1.3/8"	35	9,1						
6532/9	1.1/8"	–	1.3/8"	35							
6532/11	1.3/8"	35	1.5/8"	–	18,7						
6532/13	1.5/8"	–	2"	–							
6532/M42	–	42	2"	–	38,0						
6532/17	2.1/8"	54	–	–		48,5					

TABLE 15: Dimensions and weights of globe valves

Catalogue Number	Dimensions [mm]						Weight [g]
	H	H1	L	L1	Q	A	
6512/M22	136	28,5	100	-	60	94	1415
6512/7							1310
6512/M28							
6512/9							
6512/11	166	34	118	-	68	126	2020
6512/13	199	37	141		88	138	3500
6512/M42							
6512/17	215	42,5	173		104	5050	
6532/M22	147	44,5	80	50	60	94	1350
6532/7							1290
6532/M28							
6532/9							
6532/11	165	52,5	93	59	68	126	1910
6532/13	238	65	139	86,5	104	138	4920
6532/M42							4765
6532/17							